

Wiring Configuration Between Screen and Extron® MLC 226 Series

NOTE This manual is only for Extron® MLC 226 series panels. The ME-LVCI can only also be used with Extron® MLC 206 & Extron® MLC 104 IP Plus series panels. Please visit www.Mesa-Engineering.net for more information and manuals on connecting the ME-LVCI to these other Extron panels.

!!! WARNING !!!

Only connect the ME-LVCI to a screen equipped with a low voltage control box.
NEVER connect to a screen with out a low voltage control box.
DO NOT connect to 110v/220v AC directly. FOR LOW VOLTAGE USE ONLY!

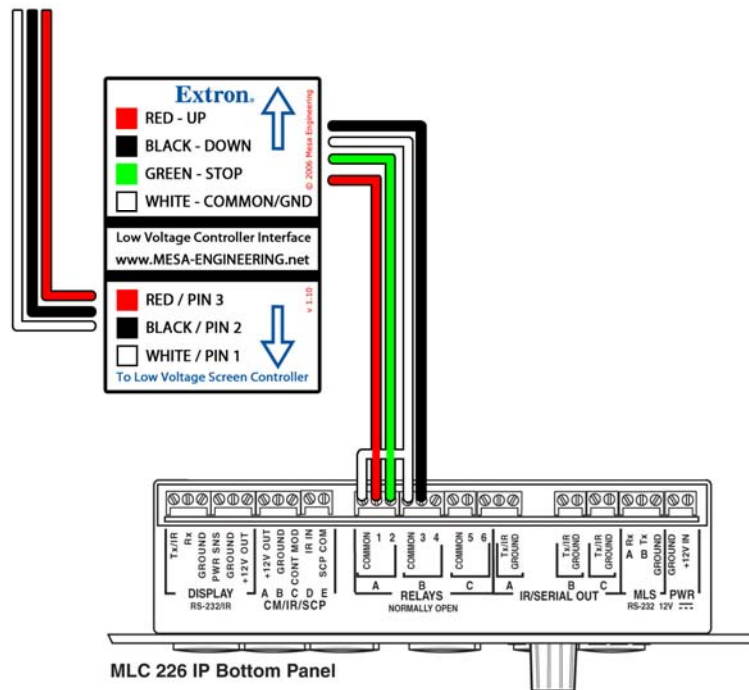
ME-LVCI to Screen Control Box (ie: DA-Lite Single Motor Low Voltage Control System)

1. Connect the **RED** wire to pin **3** of the Screen Control box (Labeled as UP on some controls).
2. Connect the **BLACK** wire to pin **2** of the Screen Control box (Labeled as DOWN on some controls).
3. Connect the **WHITE** (or bare shield) wire to pin **1** of the Screen Control box (Common).

ME-LVCI to Extron® MLC 226 Panel.

1. Connect the **RED** wire to **1** of Relay **A**.
 2. Connect the **BLACK** wire to **3** of Relay **B**.
 3. Connect the **GREEN** wire to **2** of Relay **A**.
 4. Connect the **WHITE** wire to **COMMON** of Relay **A**.
 5. Jumper **COMMON** of Relay **A** to **COMMON** of Relay **B**.
- (All grounds/shields are internally connected to WHITE, can also be used to connect to COMMON instead of jumper)

To low voltage screen control box

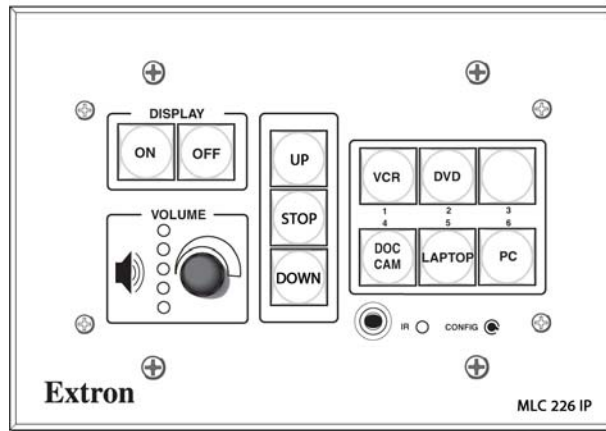


Rear panel connections

Configuration of Extron® Control Buttons

Button Arrangement

Buttons can be arranged in any order. The best and most practical locations are shown in the following figure. With **UP** as the top button, **DOWN** as the bottom button and **STOP** as the center button.



MLC 226 IP Front Panel

In the Media Link Software v3.0+ these will be the vertical buttons in the *Function* section labeled **1, 2 & 3**.

In Global Configurator v2.2.0 these will be the 3 vertical gray buttons. (panel in software should closely resemble the real MLC 226 panel.)

Electrical Components Inside a ME-LVCI

All components inside the ME-LVCI are factory set with no user adjustability.

DO NOT open the unit for any reason. Breaking seal will void warranty.

All electrical components are rated for 100v DC or greater. This does not mean that any form of high voltage can be applied to the unit. Only run low voltage from a low voltage control system box.

If you are not sure if the low voltage control system box on your screen will interface with the ME-LVCI contact us at info@mesa-engineering.net

Configuration of Extron® Control Software (Media Link v3.0+)

The following is for use with **MediaLink 226/104 Configuration Software** version 3.0 to 3.1.1. See www.extron.com for latest software updates. MediaLink 226/104 configuration software has been superseded by Global Configurator. If you are already using **Global Configurator v2.2** go to page 4.

NOTE You must be connected to the MLC panel before you can change any settings with this software. You must also have a basic understanding of the software and its uses. This section only explains how to program the up, down & stop buttons, not how to program any other settings nor how to send commands from the software to the Extron® MLC 226 Unit.

Button Configure

Found under the **Button Config** tab will be a section where you can set the properties of buttons. The three buttons associated with **Function** are the ones that are needed for this configuration.

Settings for Buttons

The settings for the three buttons will all be the same except the relay number. Settings are as follows;

Button 1

1. Set *Type of Operation* to **Relays / Internal Ops**
2. Set *When* to **press** (check mark that box)
3. Set *Port and Device Models Available* to **Relay 1 operations.**
4. Set *Function Name* to **Relay PULSE (2.0 seconds)**

Button 2

1. Set *Type of Operation* to **Relays / Internal Ops**
2. Set *When* to **press** (check mark that box)
3. Set *Port and Device Models Available* to **Relay 2 operations.**
4. Set *Function Name* to **Relay PULSE (2.0 seconds)**

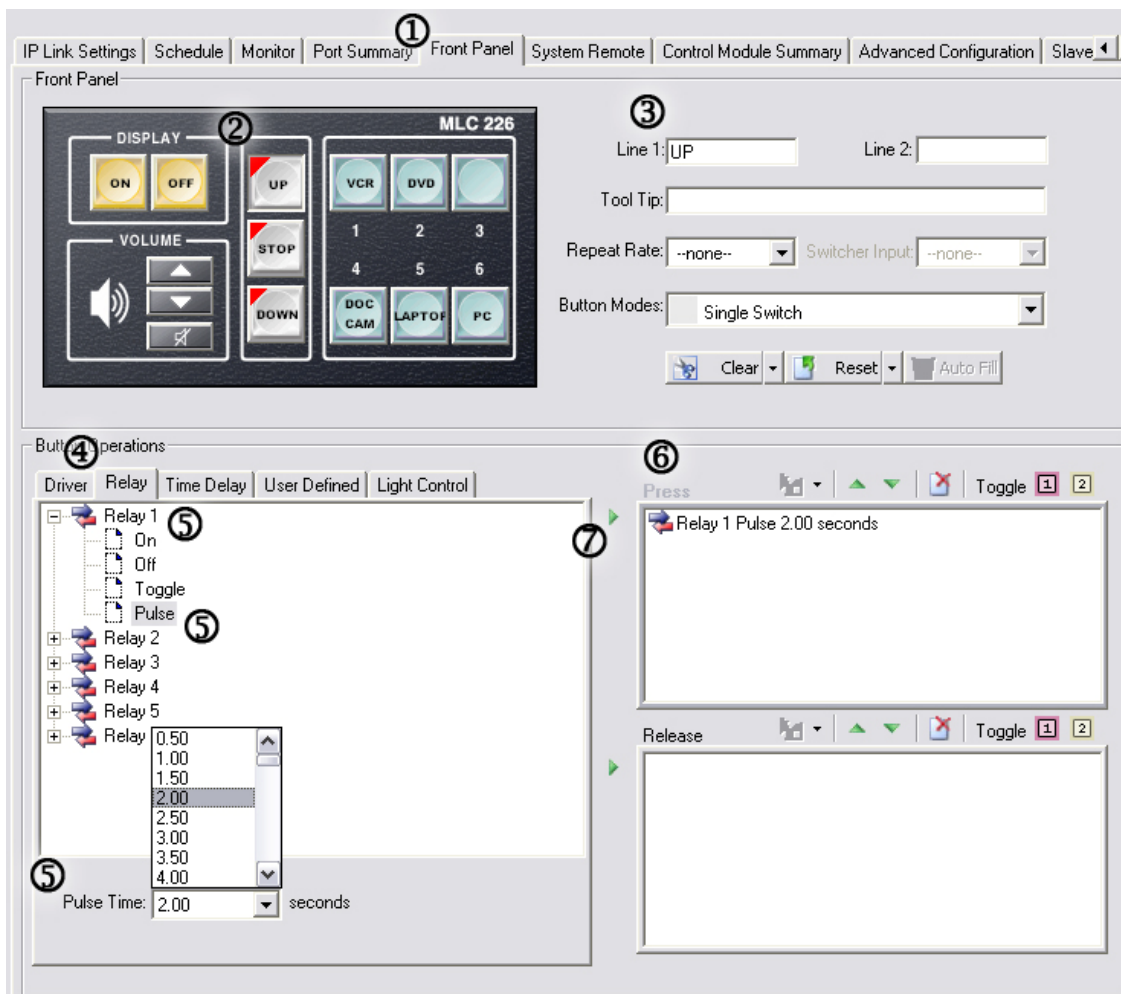
Button 3

1. Set *Type of Operation* to **Relays / Internal Ops**
2. Set *When* to **press** (check mark that box)
3. Set *Port and Device Models Available* to **Relay 3 operations.**
4. Set *Function Name* to **Relay PULSE (2.0 seconds)**

Configuration of Extron® Global Configurator v2.2.0

Button Configuration Overview

1. Select the **Front Panel** tab.
2. Select the button to be programmed.
3. Name the button (to the right, Line 1:) *optional step, makes for quicker identification within software
4. Under **Button Operations** select the **Relay** tab.
5. Select relay to be used, operation of relay and pulse time.
6. Click on **Press** above the textbox to the right. (it will turn gray)
7. Click the small green arrow to add the relay operation to the function of the button.



NOTE Once button is programmed a red triangle will appear in the upper left corner of that button.

Settings:

Button 1 (top) – **UP: PRESS Relay 1, Pulse, 2.00 seconds.**

Button 2 (middle) – **STOP: PRESS Relay 2, Pulse, 2.00 seconds.**

Button 3 (bottom) – **DOWN: PRESS Relay 3, Pulse, 2.00 seconds.**